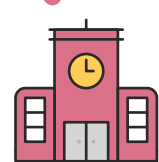


# WHAT'S HAPPENING IN OUR SCHOOLS

Insights into our School based Career Practitioners

In an increasingly complex environment, it is more important than ever to equip students with the skills and knowledge needed to make well-informed decisions about further education, training and work.

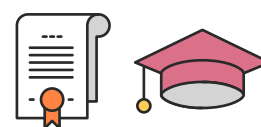
## In Australia we have...



**9,414**  
Schools



**3,778,656**  
Students



**794,068**  
Year 10, 11 and 12 students are set to graduate in the next three years.

**9 in 10**

Year 10, 11 and 12 students (90%) say career planning is quite or very important to them at the time of their schooling.

## Parents are still the number one influence on a students career planning

% of students who ranked these people as the top two people they are most comfortable in approaching about career advice.



**1.**  
**75%**  
Parents



**2.**  
**54%**  
Career Practitioner



**3.**  
**29%**  
Friends



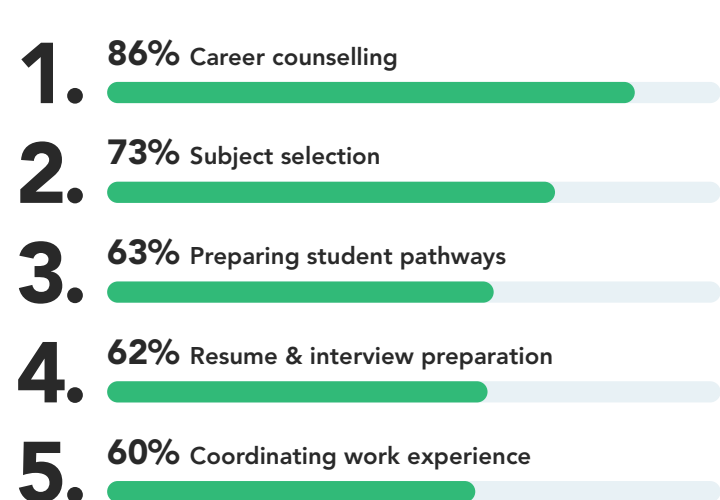
**4.**  
**22%**  
Teachers

As important influencers on the next generation, career practitioners have the challenge of balancing the time and resources they are provided with to best meet their students' needs.



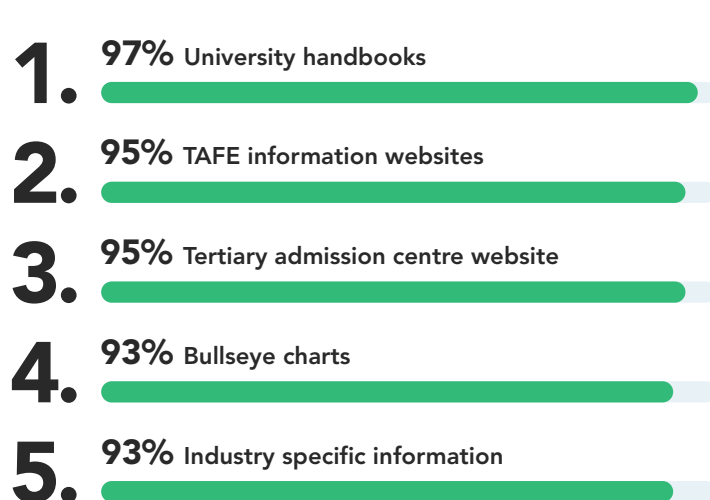
### Top 5 areas Career Practitioners spend most or some of their time on.

Career development practitioners spend some or most of their time on:



### Top 5 most frequently used resources by Career Practitioners.

The following career resources are used the most by Career development practitioners when working with students (% always or sometimes used):



## What do students find helpful for career planning?

**CAREER PATHWAYS**

**WORKPLACE LEARNING**

**ONE TO ONE DISCUSSION**

**UNIVERSITY OPEN DAYS**

**TALKING TO PEOPLE IN THE CAREER I'M INTERESTED IN**

## Career Practitioners in full time roles have a greater ability to fully implement these career development strategies students find to be most helpful...

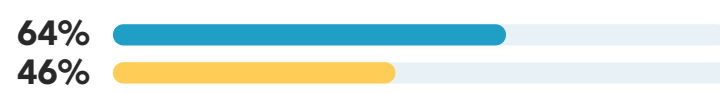
### Industry guest speakers



### Industry visits



### Developing career action plans with students



### Interview with a career practitioner



### Attending University/TAFE/RTO Open Days



Full time

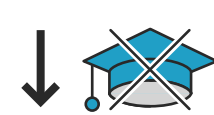


Part time



Career practitioners are 2x more likely to have had their time allowance decreased than increased in the last 3 years...

## BUT



Completion rates of students in further education are dropping.\*

**↑ 4.1%**

Apprentice and trainee cancellations and withdrawals increased by 4.1% from 2015 to 2016.†

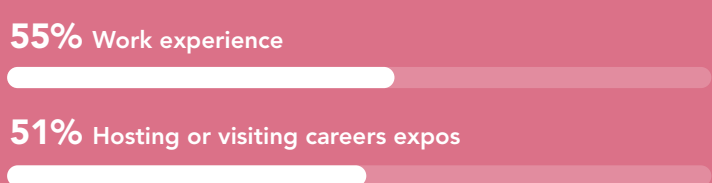
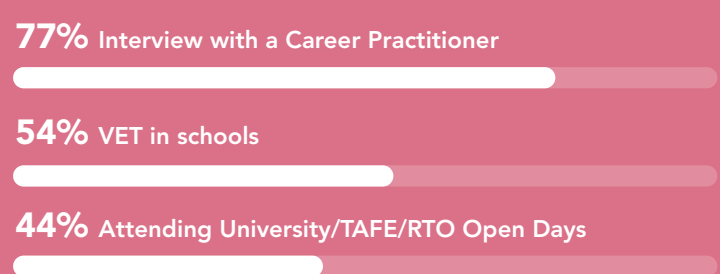


One in three university students don't complete their course within six years of enrolment.\*

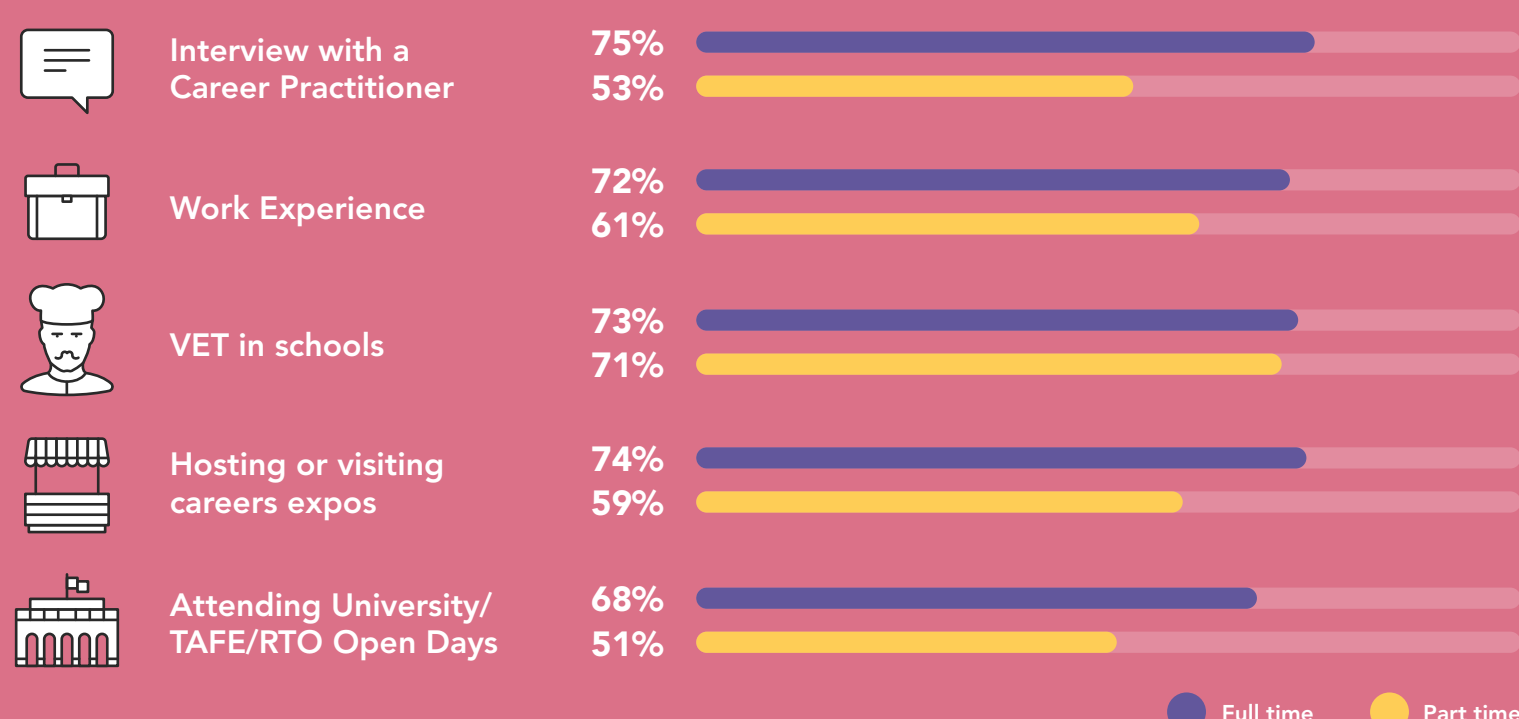
Students need to be better informed when making decisions about training or further study.

## Career practitioners need more time to better equip the next generation.

The top 5 'extremely effective' forms of career development activities in schools identified by career practitioners



Those in full time roles have a greater ability to fully implement the most effective forms of career development activities in schools



\*The term career development practitioner has been used in this infographic. CICA acknowledges that in schools across Australia different titles are used to represent people working in the area of career development. Career Development Practitioner may also be known as Career Counsellor, Career Advisor, Guidance Officer, Guidance Counsellor, School Counsellor, or Career Teacher.

Source – A national survey of career development practitioners commissioned by the Career Industry Council of Australia, conducted November and December 2016 with a total of 716 respondents.

A Yr9-12 student survey of selected Western Australian Schools, conducted in July and August 2016 with a total of 320 respondents.

\* NCVET A&T Jun 2016.

† Australian Government DET, Completion Rates of Higher Education Students- Cohort Analysis, 2005-2014.